

Introduction

SDN

**Software
Defined
Networking**





 *What is Cloud ? Why Cloud is necessary ?*

 Demystifying Cloud :-

 *NFV*

- *SDN*

- *Hypervisor Vs Container*

Why SDN ?

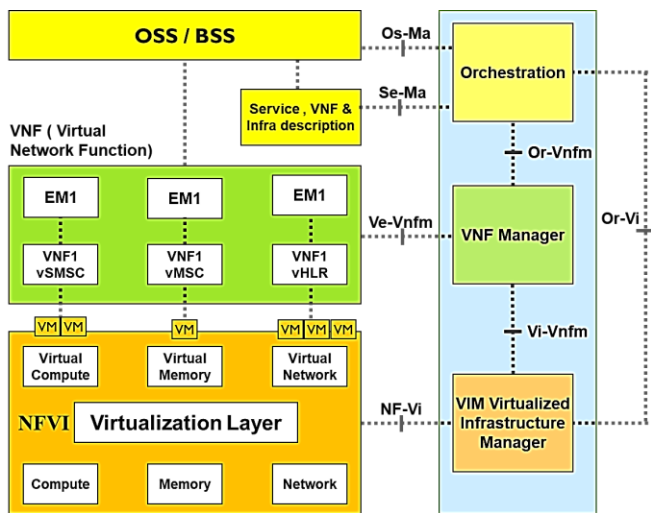


New Service or Node

Virtual Compute

Network Reachability

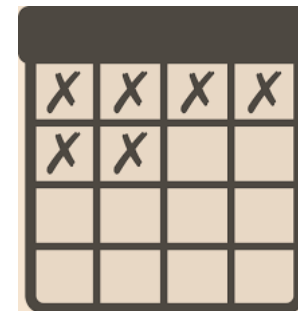
NFV



Few Seconds

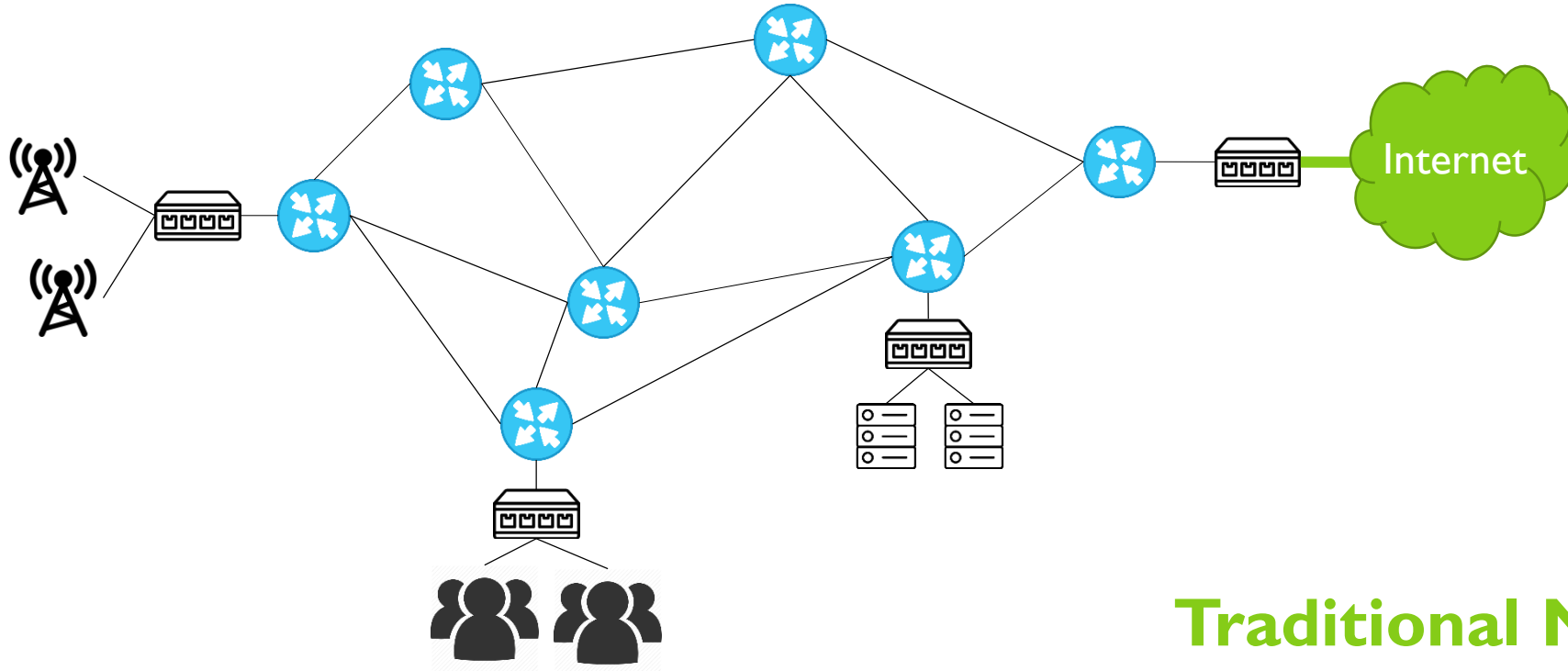


Few Days



- IP Allocation
- Policy Opening
- Routing changes
- Bandwidth Allocation
- End to End Reachability
- Service testing

What is SDN (Software-Defined Networking)



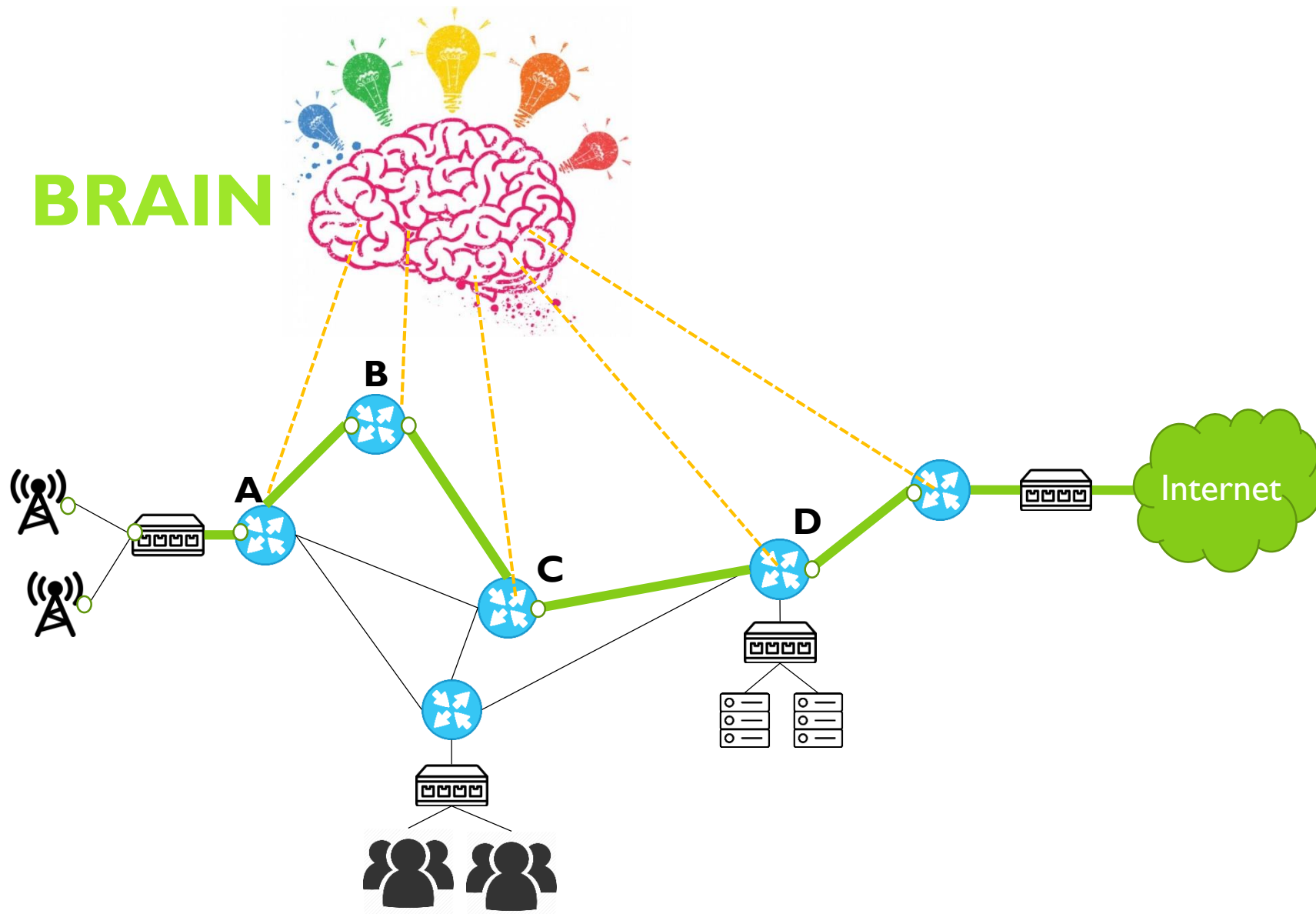
Traditional Network

Use of Integrated Hardware & Software



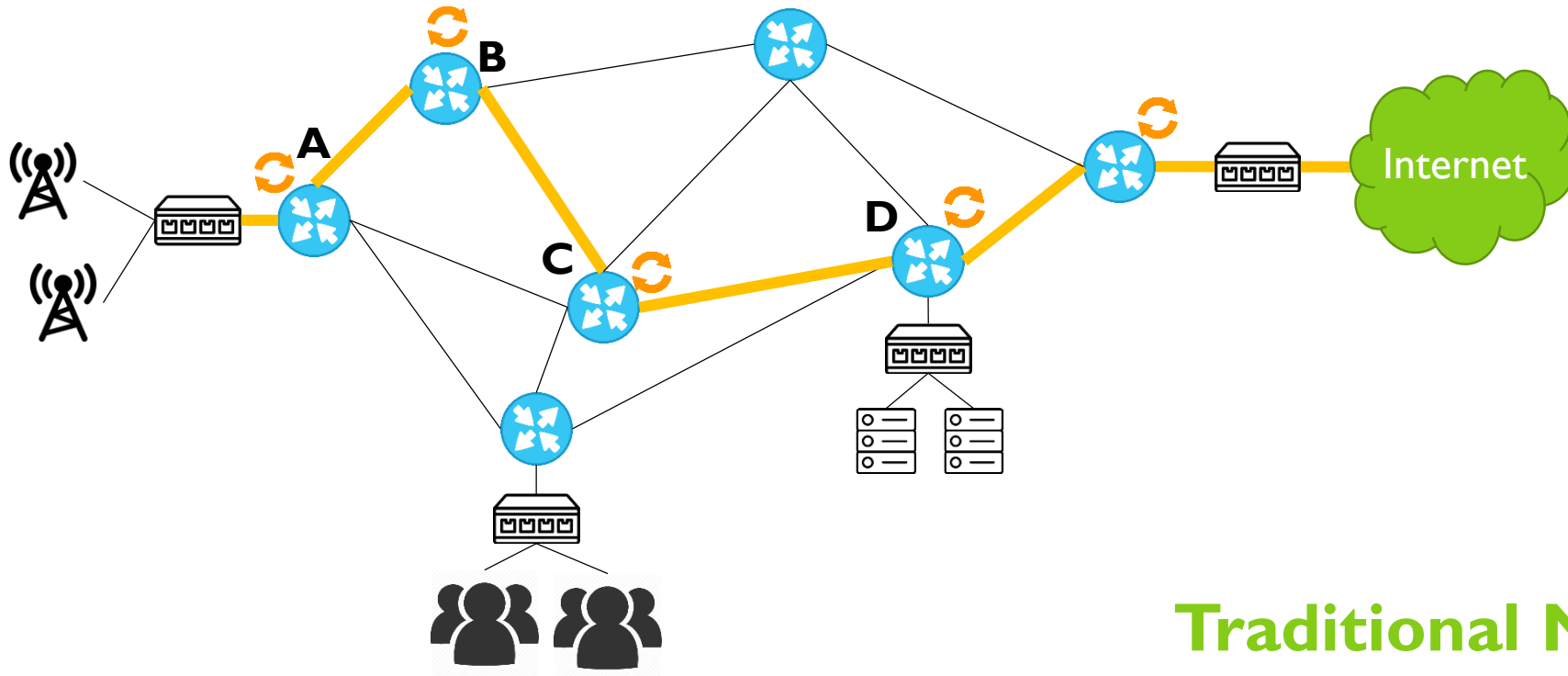
- Data or Forwarding Plane
- Control Plane
- Management Plane

BRAIN



What is SDN ?

CONTROL PLANE



Traditional Network

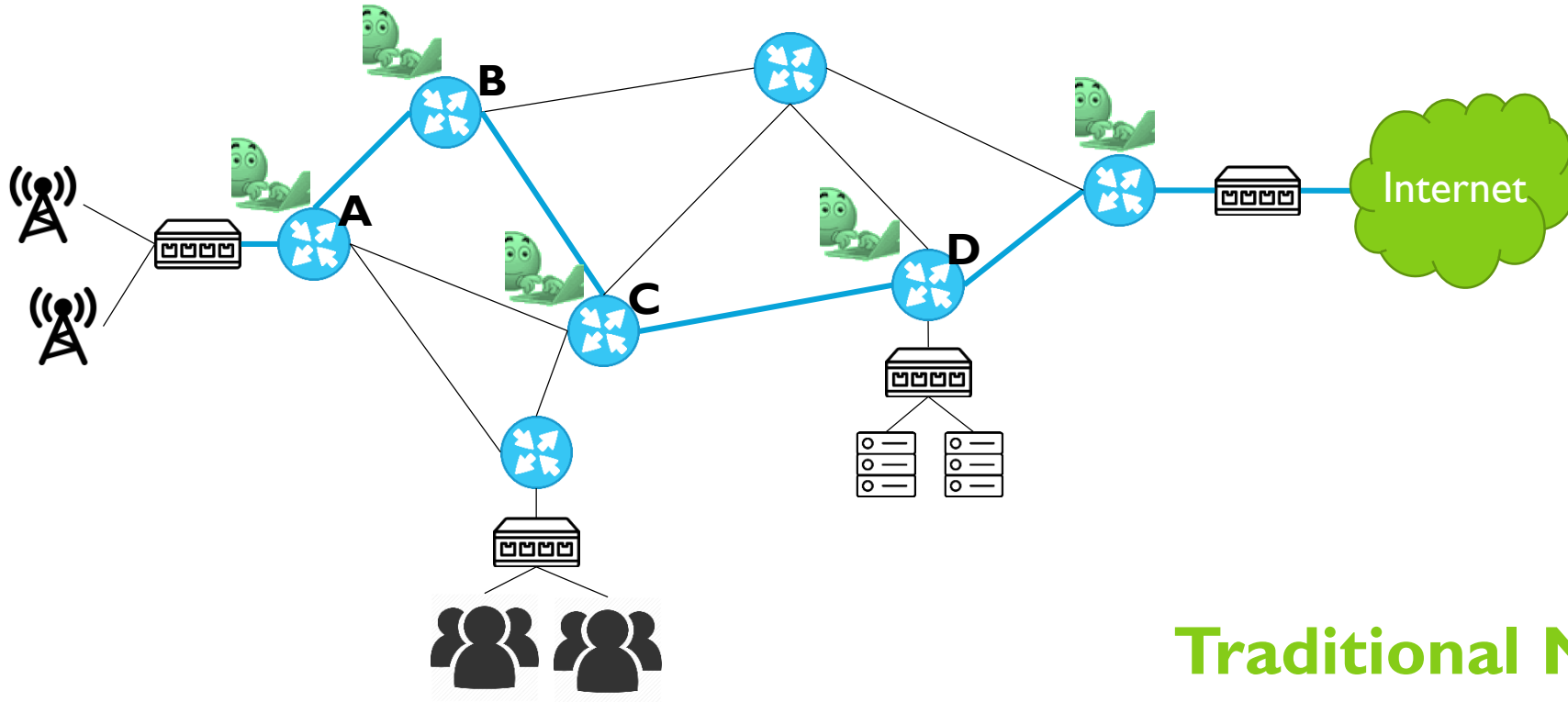
Use of Integrated Hardware & Software



- Data or Forwarding Plane
- Control Plane ✓
- Management Plane



Management PLANE



Traditional Network

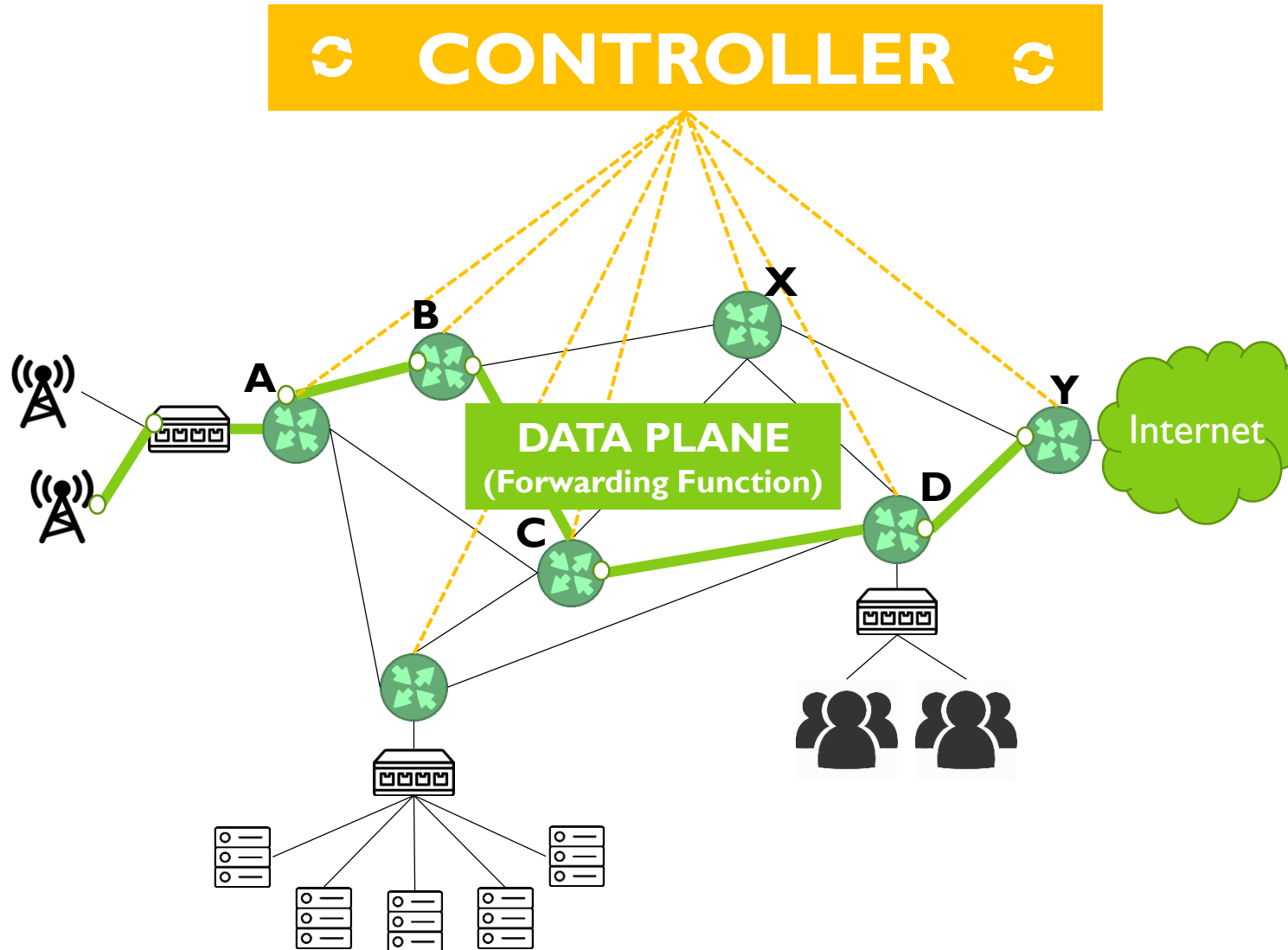
Use of Integrated Hardware & Software



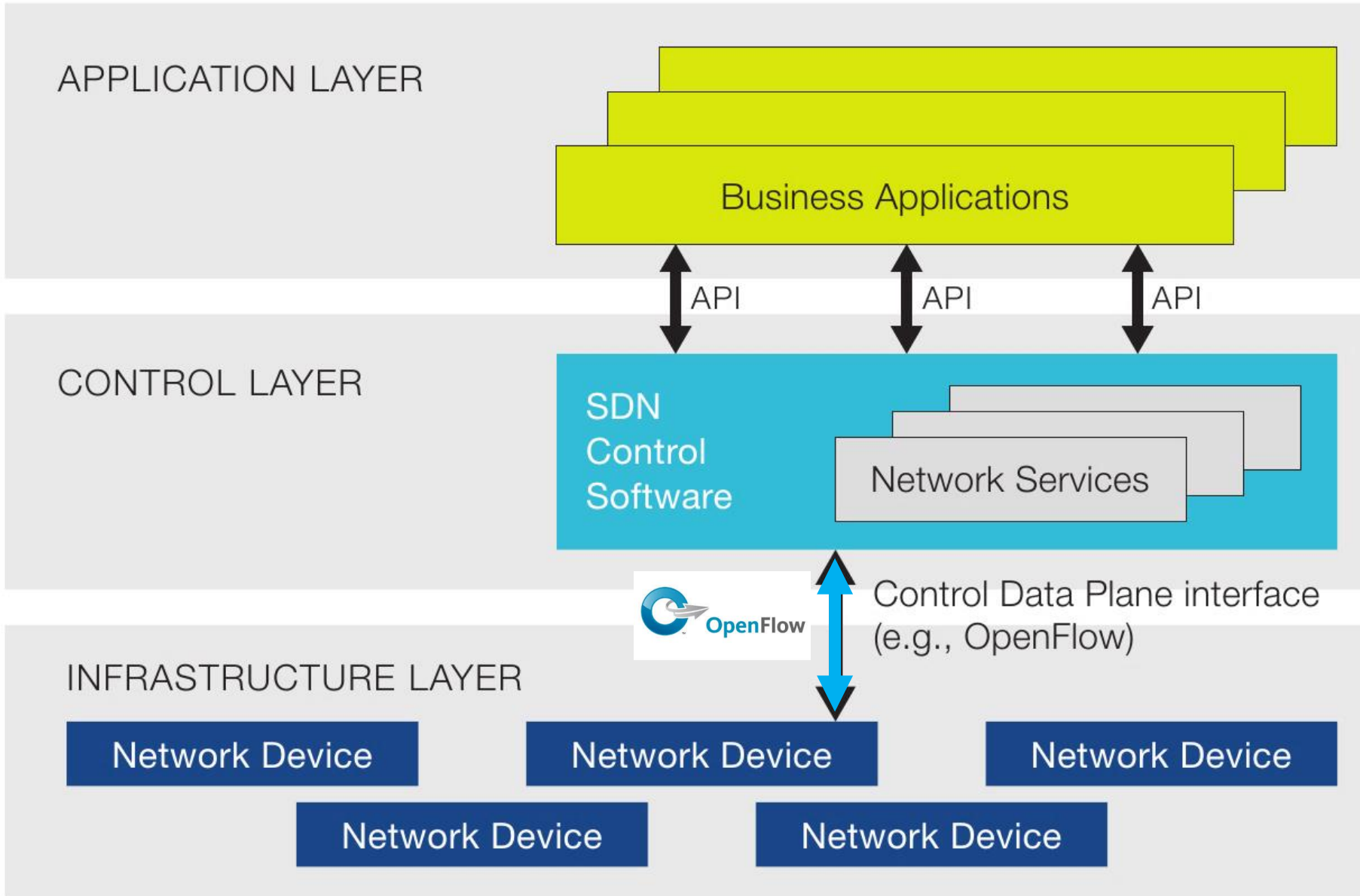
- Data or Forwarding Plane ✓
- Control Plane ✓
- Management Plane ✓



SDN : Separation of Control & Data layer



SDN Framework



SDN Layers

Governing Specs



PCRF
MSC
PGW
HLR

DNS
VAS
SMSC
C-RAN

NFV

RAM
Network- NIC
HW
Storage

Apps
Apps
Apps
Apps

SDN

